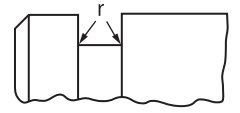
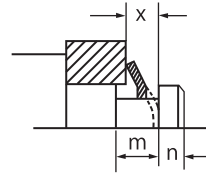
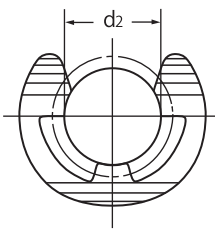
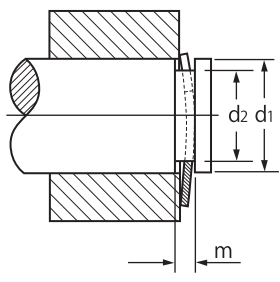
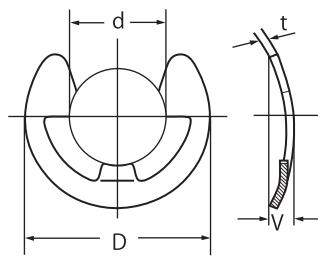


Bowed E-Rings

Applicable shaft



Size-No.	r (Max.)
7 Under	0.13
7~12 Under	0.25
12 Above	0.38

Unit : mm

Size-No.	Ring dimension					Applicable shaft								
	d	D	t	V		d1		d2		m		X		n
				Basic	Tol.	Min.	Max.	Basic	Tol.	Basic	Tol.	Min.	Max.	Min.
BETW- 1.5	1.5	4	0.4	0.8	+0.15	2	2.5	1.53	+0.06	0.8	+0.1	0.55	0.65	0.8
2	2	5	0.4	0.8		-0.1	2.5	3.2		2.05		0.8	0.55	0.65
2.5	2.5	6	0.4	0.8	+0.25	3.2	4	2.55	0	0.8		0.55	0.65	1
3	3	7	0.6	1.1		-0.1	4	5		3.05		1.1	0.85	1
4	4	9	0.6	1.1	0	5	7	4.05	+0.075	1.1		0.85	1	1.2
5	5	11	0.6	1.1		-0.1	6	8		5.05		1.1	0.85	1
6	6	12	0.8	1.3	+0.4	7	9	6.05	0	1.3		1	1.2	1.2
7	7	14	0.8	1.3		-0.1	8	11		7.1		1.3	1	1.2
8	8	16	0.8	1.3	0	9	12	8.1	+0.09	1.3		1	1.2	1.8
9	9	18	0.8	1.3		-0.1	10	14		9.1		1.3	1	1.2
10	10	20	1	1.7	+0.8	11	15	10.15	0	1.7	1.3	1.6	2	
12	12	23	1	1.7		-0.1	13	18		12.15	+0.11	1.7	1.3	1.6
15	15	29	1.5	2.3	-0.8	16	24	15.15	0	2.3	1.8	2.2	3	

Material = Carbon spring steel. Hardness = HRC40 ~50. Finish = Zinc Plate plus Chromate.

Notes

1. Manufactured on request.